

Introducing First Ever IT SUITES on Noida Expressway Fully Furnished & Fully Loaded



Our Completed Projects



**Intellect
Delivered
Sec-125**



**UTC
Delivered
Sec-132**



**Matrix
Delivered
Sec-132**



**NPX
Delivered
Sec-153**



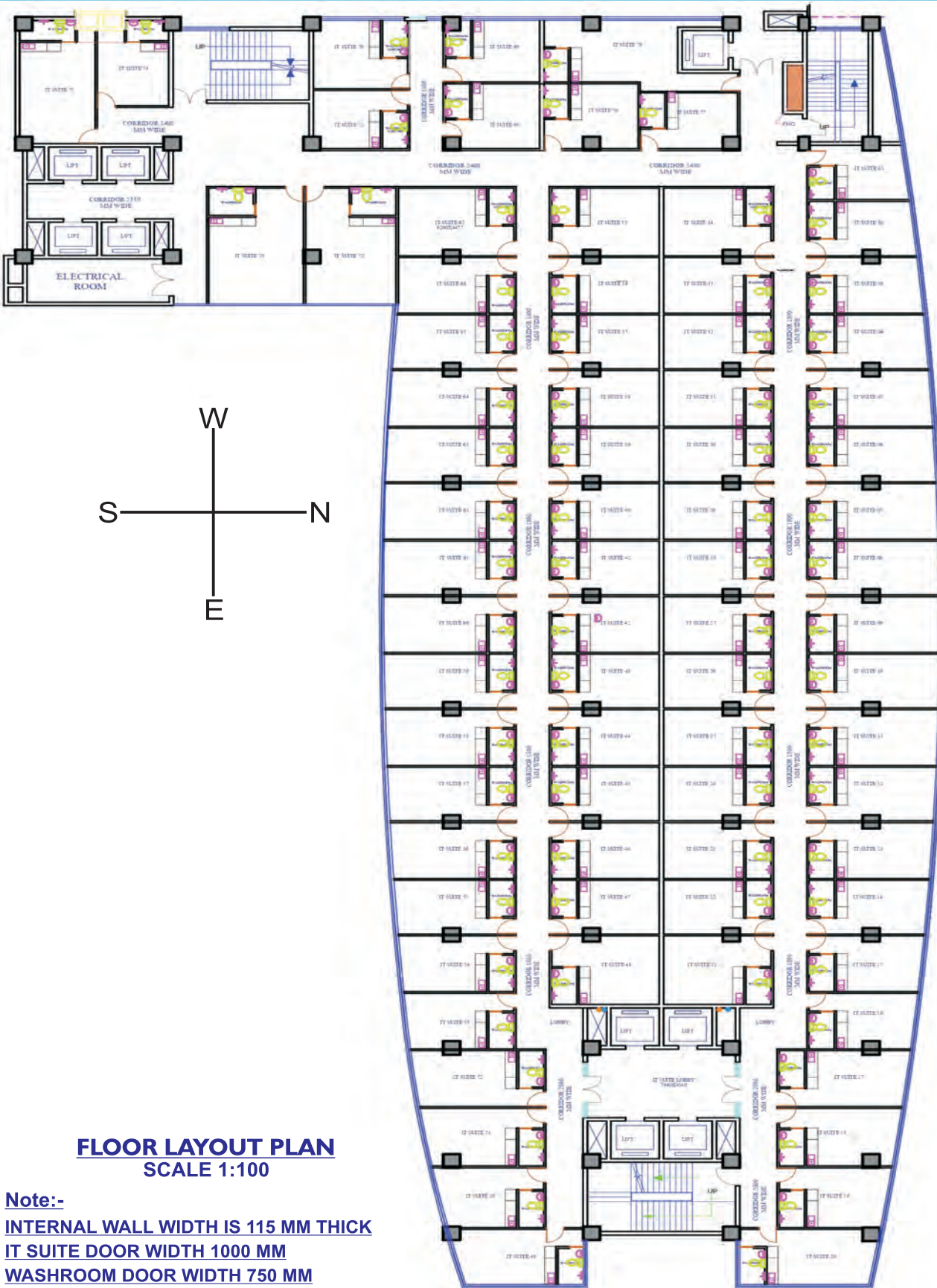
**Group Housing
Delivered
Sec-79**

Key Features of NPX Project

- * **Occupation Certificate Received**
- * **IGBC Certified Gold Building**
- * **Fully Loaded & Fully Furnished Spaces**
- * **24x7 Security and Surveillance**
- * **Zero KM From Metro**
- * **Well Connected with Noida Expressway**
- * **Surrounded by Major Corporate Giants**
- * **250000 habitation available in the nearest residential proximity**
- * **Touch Free Entry and Exit**
- * **Ample Car Parking**
- * **Promising Rental and Appreciation Rate**
- * **Upcoming Premium Club, Gym and recreational amenities**



IT SUITS FLOOR PLAN



Highway View

River View

FLOOR LAYOUT PLAN
SCALE 1:100

Note:-
INTERNAL WALL WIDTH IS 115 MM THICK
IT SUITE DOOR WIDTH 1000 MM
WASHROOM DOOR WIDTH 750 MM

SPECIFICATIONS

We Offer you the Fully-Furnished IT Suites.

Offering

- * Air Conditioner (Split / VRV / AHU)
- * Android LED TV
- * Bed, Mattress With Pillows,
2 set of Bed Sheets, 2 Towel
- * Wardrobe with Hanger, Iron with
Standing Iron Table, Small locker
- * Intercom Facility
- * Two Seater Sofa / Two Chairs
- * Study Chair & Table with Book Shelf,
Small Printer
- * Wooden Flooring
- * Light Fitting and Fixture with Sufficient
Power Point & Electrical Point
- * Exclusive High Speed Elevators
for IT Suites
- * Dedicated Reception area with
intercom Facility
- * Exclusive Launderette on Each Floor

Kitchen

- * Kitchen Cabinets
- * Fridge
- * Hot Plate
- * Food Processor
- * Chimney
- * Tea / Coffee maker
with Tray
- * RO
- * Crockery

Washroom

- * Vanity Cabinet
- * Vanity Mirror
- * Bathing Kit
- * Hair Dryer
- * Floor Mat



SIZE & DIMENSIONS



Super Area - 460 Sqft

Length - 19 Ft.

Width - 12.13 Ft.

Our Happy Customers at NPX

Some of the biggest brands of the country that are already operational



Location Advantage



CONTACT US.



Sec 153, Noida Expressway



marketing@urbtechindia.com

www.urbtechindia.com